

Amendment 37 to the Fishery Management Plan for the Snapper Grouper Fishery of the South Atlantic Region

Hogfish Options Only for GMFMC Consideration

(3/17/15)



Amendment 37 to the Fishery Management Plan for the Snapper Grouper Fishery of the South Atlantic Region (Amendment 37) would potentially include several actions pertaining to management of the snapper grouper fishery. To date, the Council has indicated that the following items should be included in the amendment:

- Modification of the hogfish management unit in response to stock assessment
- Partial delegation of commercial and/or recreational management of East Florida-Florida Keys hogfish to the state of Florida in federal waters adjacent to the state of Florida
- Adjustment to hogfish fishing levels and management measures for both Atlantic stocks of hogfish (GA-NC and East Florida-Florida Keys)
- Revision to the composition of the Jacks Complex and commercial management measures for almaco jack
- Removal of size limits for deepwater species (silk snapper, queen snapper, and blackfin snapper)
- Modification to spawning season closure for shallow water grouper
- Modification of size limit for red grouper
- Modification of bag limit for black sea bass

Why is the Council Considering Action?

Hogfish

The Florida Fish and Wildlife Conservation Commission completed a stock assessment for hogfish in 2014. The South Atlantic Council's SSC reviewed the assessment and provided fishing level recommendations in October 2014. The Council received the SSC's recommendations at their December 2014 meeting. Based on genetic evidence the SSC supported treating hogfish in the South Atlantic as two stocks: Georgia-North Carolina (GA-NC) and East Florida-Florida Keys. Each assessment was then evaluated with regard to fishing level recommendations. The SSC recommended that catch level recommendations for the GA-NC stock be developed using the Only Reliable Catch Stocks (ORCS) approach, as outlined in Level 4 of the Council's ABC control rule. For the East Florida-Florida Keys stock, the SSC considered the benchmark assessment to represent the best available science and recommended it for use in management. The assessment results indicated the East Florida-Florida Keys stock is undergoing overfishing and is overfished. The SSC then applied the ABC Control Rule and recommended a P^* of 27.5%, and a $P_{REBUILD}$ of 72.5% for that stock.

The ABC for the GA-NC stock, as recommended by the SSC, is 28,161 lbs ww. ABC for the East Florida-Florida Keys stock will be determined from projections based on criteria specified by the Council at their March 2015 meeting.

Possible Actions and Alternatives

Action 1. Modify the Fishery Management Unit for Hogfish

Alternative 1 (No action). There is a Gulf stock and South Atlantic stock of hogfish separated at the **South Atlantic** Council boundary.

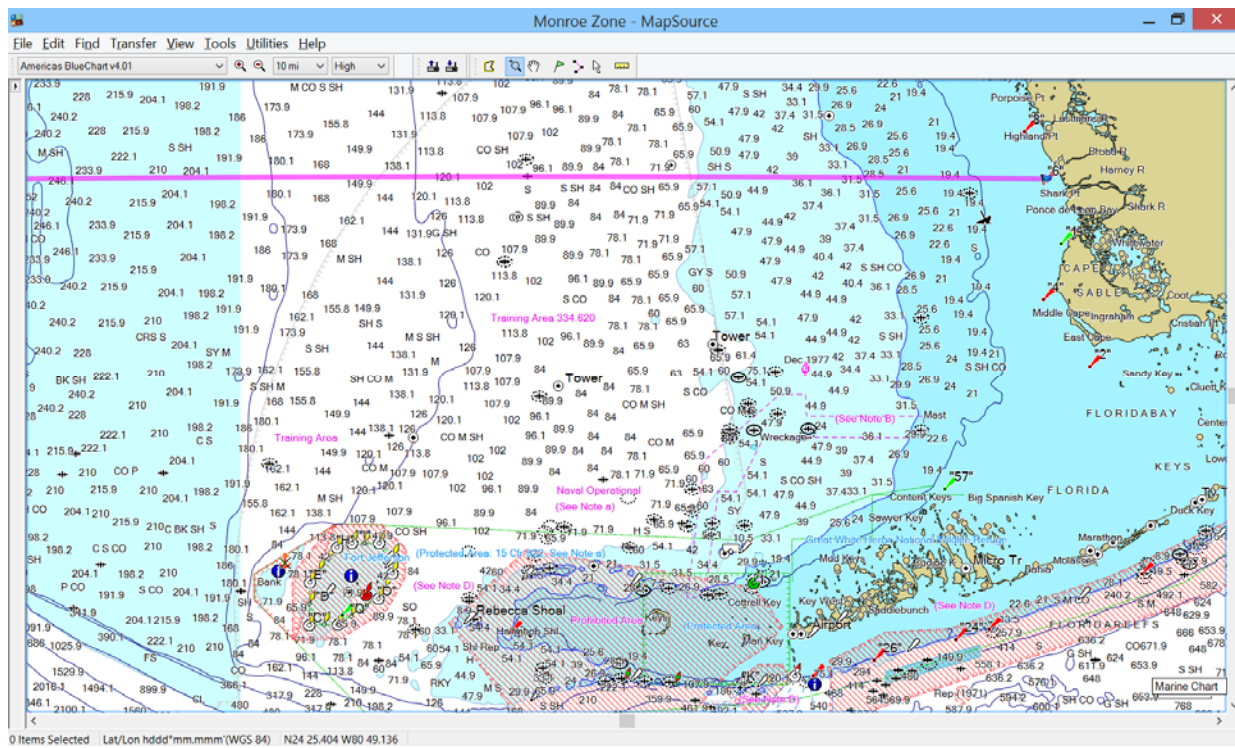
Alternative 2. Modify the FMU to specify an **Atlantic** Georgia through North Carolina (GA-NC) stock of hogfish **to include** ~~Georgia through North Carolina~~ from the North Carolina/Virginia border to the **Georgia/Florida** border.

Alternative 3. Modify the FMU to specify a **Florida** an **East Florida-Florida Keys** stock of hogfish **to include** ~~from the Florida/Georgia state-line~~ border south to:

Sub-alternative a. The **South Atlantic/Gulf of Mexico** Council boundary.

Sub-alternative b. The **Monroe/Collier County** line.

Sub-alternative c. Shark Point on Florida southwest coast.



Action 2. Partial delegation of commercial and/or recreational management of Florida the East Florida-Florida Keys hogfish stock to the State of Florida in Federal Waters Adjacent to the State of Florida

Alternative 1 (No action). Do not delegate management of hogfish in the Reef Fish and Snapper Grouper Fishery Management Plans for the Gulf and South Atlantic Councils, respectively.

Alternative 2. Determine specific recreational management items for delegation to the State of Florida for hogfish:

Sub-alternative 2a. Size limits

Sub-alternative 2b. Seasons

Sub-alternative 2c. Bag limits

Sub-alternative 2d. Minor modifications to existing allowable gear (e.g., circle hook requirement)

Alternative 3. Determine specific commercial management items for delegation to the State of Florida for hogfish:

Sub-alternative 3a. Size limits

Sub-alternative 3b. Seasons

Sub-alternative 3c. Commercial trip limits

Sub-alternative 3d. Minor modifications to existing allowable gear (e.g., circle hook requirement)

Action 3. Establish Acceptable Biological Catch and Annual Catch Limits (ACLs) for Atlantic the GA-NC and East Florida-Florida Keys stocks of Hogfish

Alternative 1 (No action). Maintain the current commercial and recreational ACLs for hogfish (FL to NC) based on the South Atlantic Council's Snapper Grouper Fishery Management Plan. The Current ABC = 137,824 lbs ww and ACL = ABC. The commercial ACL = 49,469 lbs ww (36.69%) and the recreational ACL = 85,355 lbs ww (63.31%).

Alternative 2. Establish an ACL for the GA-NC stock. Specify commercial and recreational ACLs based on existing sector allocations (36.69% commercial and 63.31% recreational).

Sub-alternative 2a. ACL = ABC = 28,161 lbs ww. Commercial ACL = 10,332 lbs ww. Recreational ACL = 17,829 lbs ww.

Sub-alternative 2b. ACL = 95%ABC = 26,753 lbs ww. Commercial ACL = 9,816 lbs ww. Recreational ACL = 16,937 lbs ww.

Sub-alternative 2c. ACL = 90%ABC = 25,345 lbs ww. Commercial ACL = 9,299 lbs ww. Recreational ACL = 16,046 lbs ww.

Alternative 3. Establish an ACL for the East Florida-Florida Keys stock. Specify commercial and recreational ACLs for 2016, 2017, 2018, and 2019 and beyond. The ACL for 2019 will remain in effect until modified. ACLs in 2017, 2018, and 2019 will not increase automatically in a subsequent year if present year projected catch has exceeded the total ACL. Specify commercial and recreational ACLs based on existing sector allocations (36.69% commercial and 63.31% recreational).

Sub-alternative 3a. ACL = ABC = X. Commercial ACL = x. Recreational ACL = x.

Sub-alternative 3b. ACL = 95%ABC = X. Commercial ACL = x. Recreational ACL = x.

Sub-alternative 3c. ACL = 90%ABC = X. Commercial ACL = x. Recreational ACL = x.

(insert table of values when projections are available)

Action 4. Modify the Recreational Annual Catch Target (ACT) for Hogfish

Alternative 1 (No Action). Do not modify the ACT for hogfish for the recreational sector. The current ACT is 59,390 lbs ww and applies to hogfish throughout the South Atlantic Council’s jurisdiction.

Alternative 2. Establish an ACT for the GA-NC stock of hogfish for the recreational sector that equals the recreational $ACL \cdot (1 - PSE)$ or $ACL \cdot 0.5$, whichever is greater.

	Hogfish ACT (lbs ww)		
Year	Action 3; Sub-alt 2a (ACL=ABC)	Action 3; Sub-alt 2b (ACL=95%ABC)	Action 3; Sub-alt 2c (ACL=90%ABC)
2016			
2017			
2018			
2019[G1] and beyond until modified			

Note: Calculations use the most recent 5 years of recreational landings to obtain the PSE.

	Hogfish PSE
Year	
2010	
2011	
2012	
2013	
2014	
Average	

Alternative 3. Establish an ACT for the East Florida-Florida Keys) stock of hogfish for the recreational sector that equals the recreational $ACL \cdot (1 - PSE)$ or $ACL \cdot 0.5$, whichever is greater.

Year	Hogfish ACT (lbs ww)		
	Action 3; Sub-alt 3a (ACL=ABC)	Action 3; Sub-alt 3b (ACL=95%ABC)	Action 3; Sub-alt 3c (ACL=90%ABC)
2016			
2017			
2018			
2019 and beyond until modified			

Note: Calculations use the most recent 5 years of recreational landings to obtain the PSE.

NOTE TO IPT: ADD ACTIONS FOR COMMERCIAL AND RECREATIONAL MANAGEMENT MEASURES??

From Gregg: The Council did not ask for this so I assumed they just wanted to update the ACLs/ACTs and have the seasons close. However, we should show the current management measures and Ams (from Generic AM amendment) and perhaps some tables for each stock (Atlantic and Florida) that show: (1) commercial catch/trip to evaluate trip limits, (2) recreational catch/trip to evaluate bag limits, (3) sizes landed to evaluate commercial and recreational size limits. Need to look at diving sector separately if at all possible.